

Public Document Pack

PRESENTATION SLIDES

DEVELOPMENT MANAGEMENT COMMITTEE - WEDNESDAY, 16TH FEBRUARY, 2022

The following presentation slides were used at the Development Management Committee meeting.

This page is intentionally left blank

We'll be starting soon

Development Management
Committee

16th February 2022

Page 1



AGENDA ITEM NO. 3

Development Management Committee

16th February 2022

Development Management Committee

Attendance & Declarations of interest (agenda item 1)

Development Management Committee

Agenda item 2: Minutes

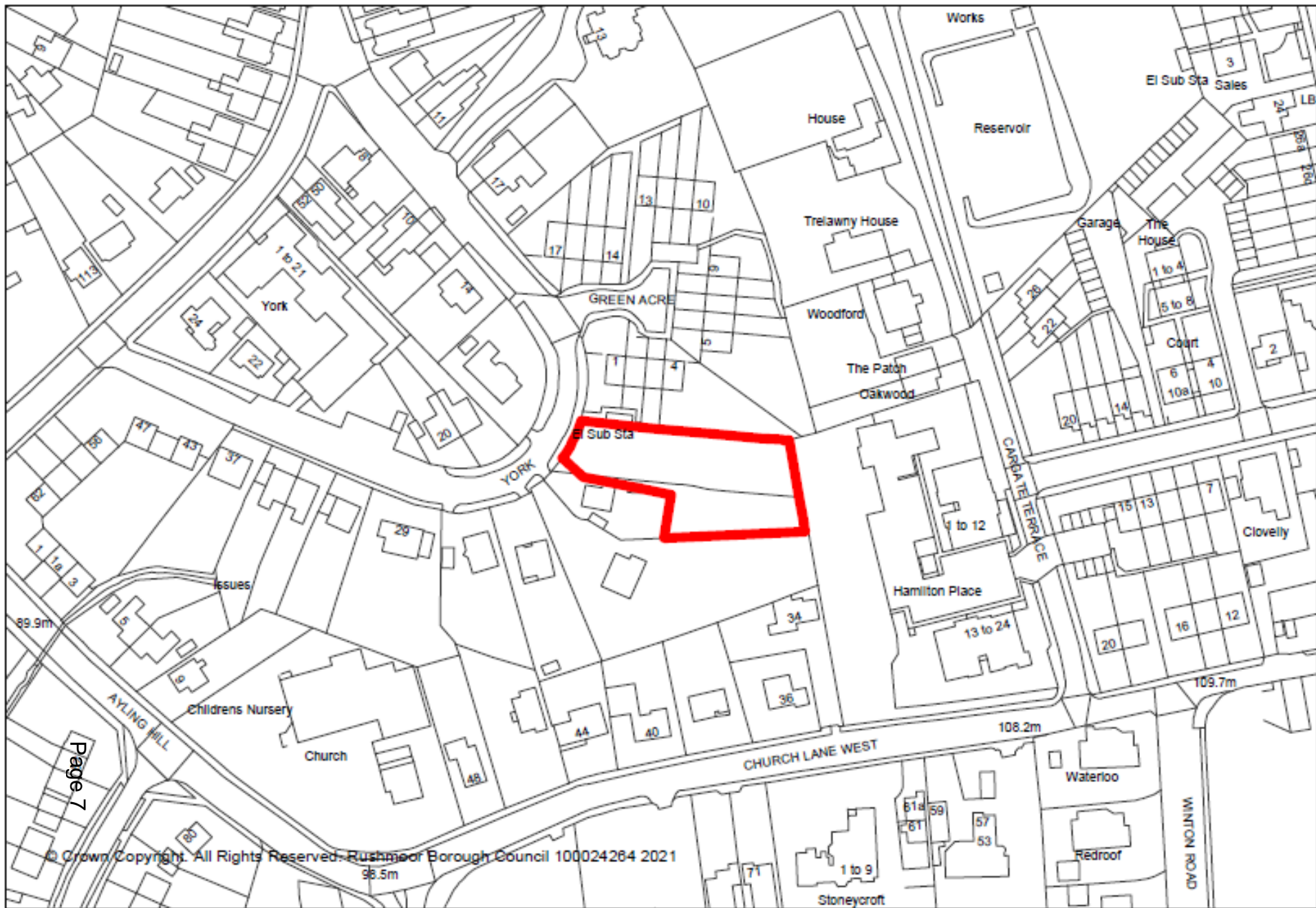
Development Management Committee

Agenda item 3: Planning Applications

Development Management Committee

Item 5: 22/00026/FULPP

**Development Site, Land at ‘The
Haven’, 19 York Crescent
Aldershot**



© Crown Copyright. All Rights Reserved. Rushmoor Borough Council 100024264 2021





















Page 17















© This drawing is copyright.
It is sent to you in confidence and must not be reproduced or disclosed to third parties without our prior permission.

Do not scale from this drawing, other than for Local Authority Planning purposes.

This drawing is to be read in conjunction with all relevant consultants, specialist manufacturers drawings and specifications.

Any discrepancies in dimensions or details on or between these drawings should be drawn to our attention.

All dimensions are in millimetres unless noted otherwise.

Any surveyed information incorporated within this drawing cannot be guaranteed as accurate unless confirmed by fixed dimension.

Category 'A' Tree
Canopy shown N E S W

Category 'B' Tree
Canopy shown N E S W

Category 'C' Tree
Canopy shown N E S W

Root Protection Area

REV	DATE	DESCRIPTION	INITIAL	CHECKED
PLANNING				



harding rose architects

CLIENT	Samco Construction Ltd		
PROJECT	The Haven, 19 York Crescent, Aldershot, GU11 3JN		
TITLE	Proposed Site Layout		
SCALE	1:200 @A2	DATE	03.02.21
DRAWN	AC	PROJECT NO.	20.797
		P.01	G



© This drawing is copyright.
It is sent to you in confidence and must not be reproduced or disclosed to third parties without our prior permission.

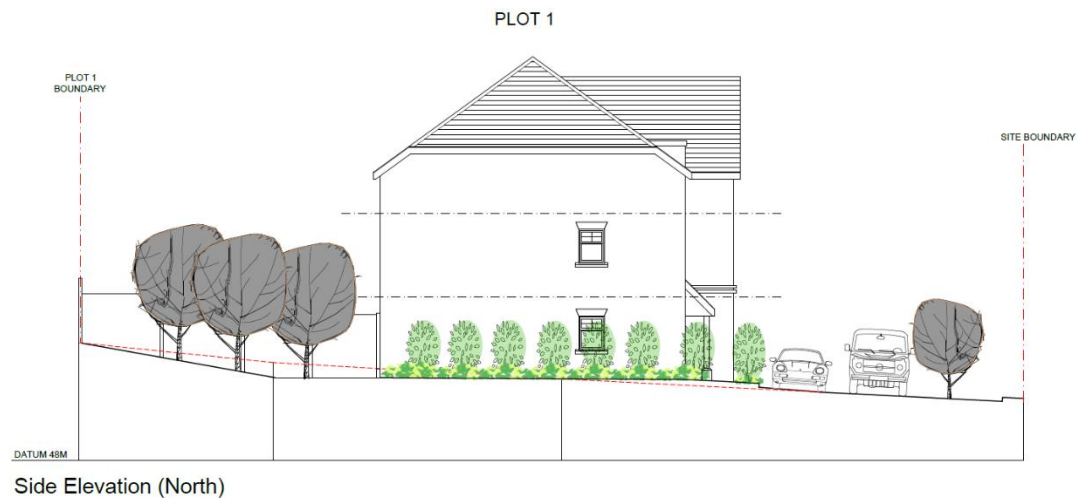
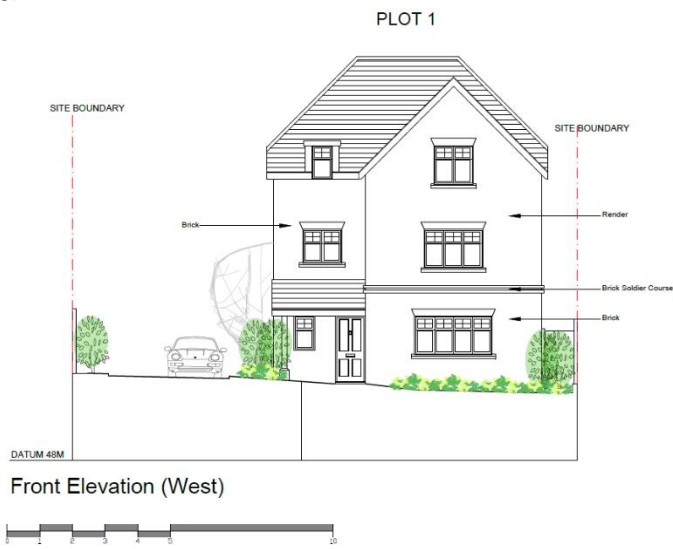
Do not scale from this drawing, other than for Local Authority Planning purposes.

This drawing is to be read in conjunction with all relevant consultants, specialist manufacturers drawings and specifications.

Any discrepancies in dimensions or details on or between these drawings should be drawn to our attention.

All dimensions are in millimetres unless noted otherwise.

Any surveyed information incorporated within this drawing cannot be guaranteed as accurate unless confirmed by fixed dimension.



REV	DATE	DESCRIPTION	INITIALS	CHECKED
PLANNING				



harding rose architects

CLIENT
Samco Construction Ltd

PROJECT
The Haven, 19 York Crescent, Aldershot, GU11 3JN

TITLE
Plot 1 Proposed Front and Side Elevations

SCALE 1:100 @A2	DATE 28.08.20		
DRAWN AC	PROJECT NO. 20.797		
<table border="1"> <tr> <td>P.03</td> <td>-</td> </tr> </table>		P.03	-
P.03	-		

© This drawing is copyright.
It is sent to you in confidence and must not be reproduced or disclosed to third parties without our prior permission.

Do not scale from this drawing, other than for Local Authority Planning purposes.

This drawing is to be read in conjunction with all relevant consultants, specialist manufacturers drawings and specifications.

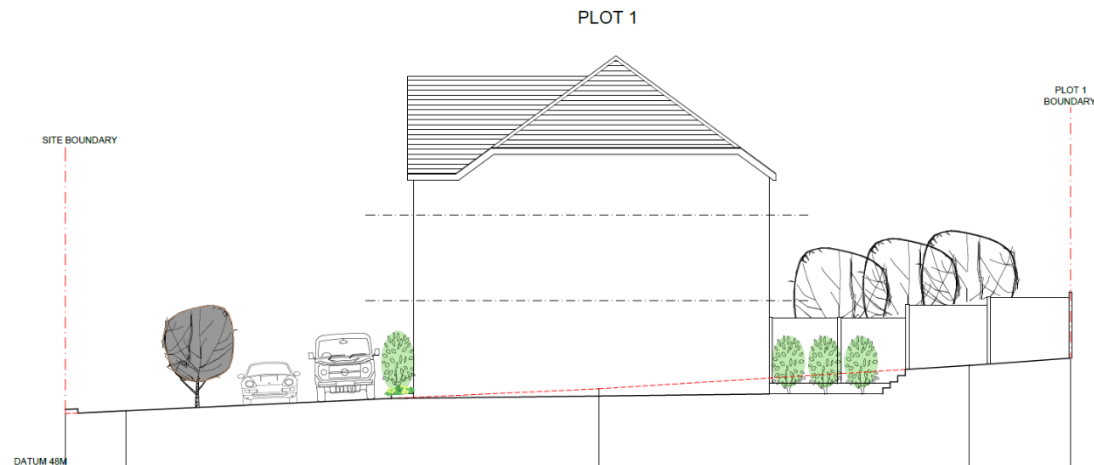
Any discrepancies in dimensions or details on or between these drawings should be drawn to our attention.

All dimensions are in millimetres unless noted otherwise.

Any surveyed information incorporated within this drawing cannot be guaranteed as accurate unless confirmed by fixed dimension.



Rear Elevation (East)



Rear Elevation (East)

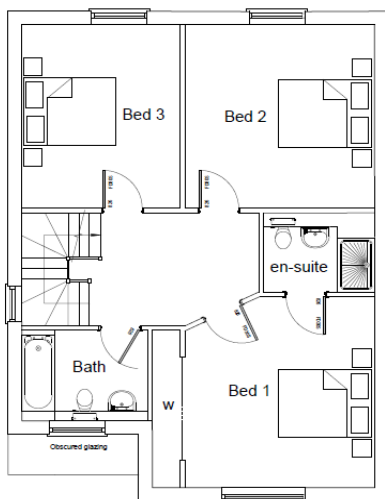
REV	DATE	DESCRIPTION	INITIAL	CHECKED
PLANNING				



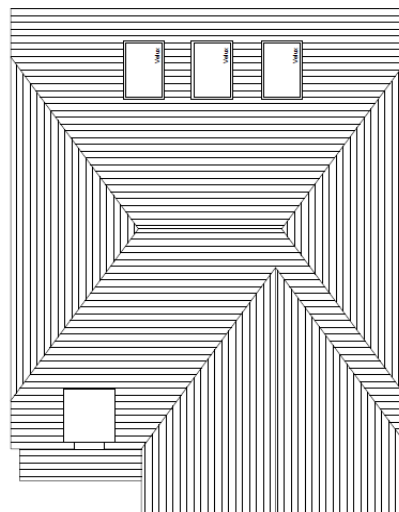
harding rose architects

CLIENT Samco Construction Ltd
PROJECT The Haven, 19 York Crescent, Aldershot, GU11 3JN
TITLE Plot 1 Proposed Rear and Side Elevations

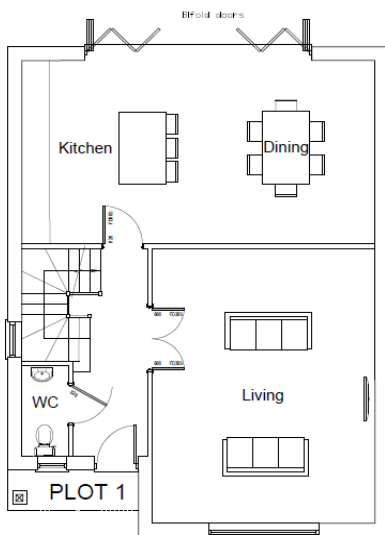
SCALE	DATE	PROJECT NO.	PAGE
1:100 @A2	28.08.20	20.797	P.04
DRAWN	AC		-



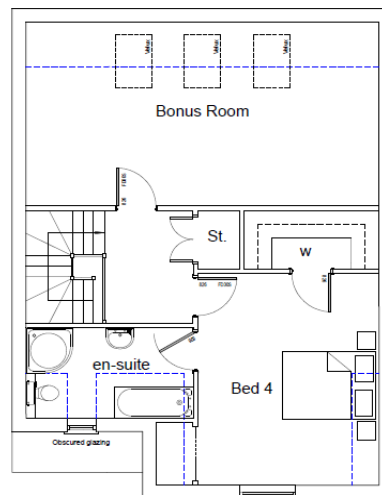
First Floor Plan
73.8 sqm / 794.3 sqft



Roof Plan
221.4 sqm / 2383.1 sqft



Ground Floor Plan
73.8 sqm / 794.3 sqft



Second Floor Plan
73.8 sqm / 794.3 sqft
----- 2.1m head height

© This drawing is copyright.
It is sent to you in confidence and must not be reproduced or disclosed to third parties without our prior permission.

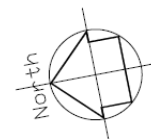
Do not scale from this drawing, other than for Local Authority Planning purposes.

This drawing is to be read in conjunction with all relevant consultants, specialist manufacturers drawings and specifications.

Any discrepancies in dimensions or details on or between these drawings should be drawn to our attention.

All dimensions are in millimetres unless noted otherwise.

Any surveyed information incorporated within this drawing cannot be guaranteed as accurate unless confirmed by fixed dimension.



REV	DATE	DESCRIPTION	INITIAL	CHECKED
PLANNING				



harding rose architects

CLIENT	Samco Construction Ltd		
PROJECT	The Haven, 19 York Crescent, Aldershot, GU11 3JN		
TITLE	Plot 1 Proposed Plans		

SCALE	DATE
1:100 @A3	28.08.20
DRAWN	PROJECT NO.
AC	20.797
P.02 -	



Front Elevation (West)



Rear Elevation (East)



© This drawing is copyright.
It is sent to you in confidence and must not be reproduced or disclosed to third parties without our prior permission.

Do not scale from this drawing, other than for Local Authority Planning purposes.

This drawing is to be read in conjunction with all relevant consultants, specialist manufacturers drawings and specifications.

Any discrepancies in dimensions or details on or between these drawings should be drawn to our attention.

All dimensions are in millimetres unless noted otherwise.

Any surveyed information incorporated within this drawing cannot be guaranteed as accurate unless confirmed by fixed dimension.

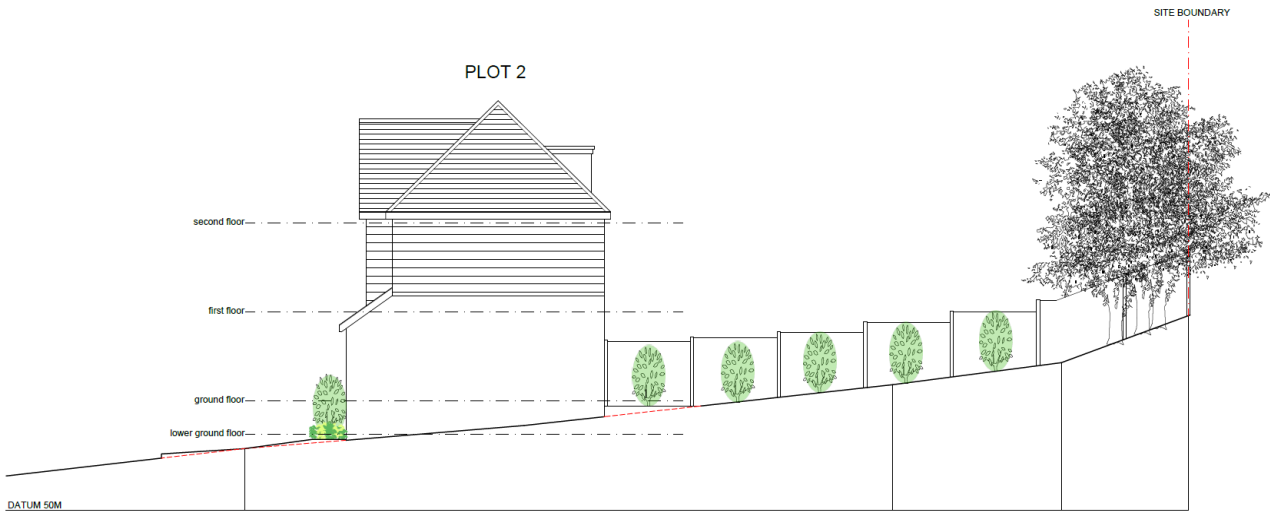
REV	DATE	DESCRIPTION	INITIAL	CHECKED
PLANNING				



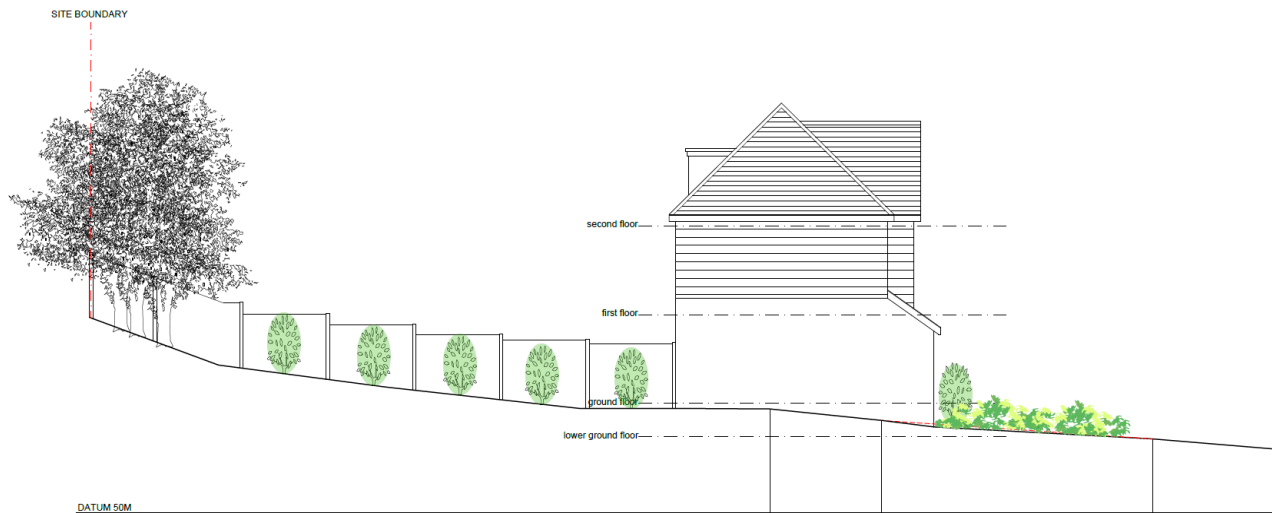
harding rose architects

CLIENT		Samco Construction Ltd		
PROJECT		The Haven, 19 York Crescent, Aldershot, GU11 3JN		
TITLE		Plots 2 & 3 Proposed Front and Rear Elevations		

SCALE		DATE	
1:100 @A2		28.08.20	
DRAWN		PROJECT NO.	
AC		20.797	
P.06			-



Side Elevation (South)



Side Elevation (North)



© This drawing is copyright.
It is sent to you in confidence and must not be reproduced or disclosed to third parties without our prior permission.

Do not scale from this drawing, other than for Local Authority Planning purposes.

This drawing is to be read in conjunction with all relevant consultants, specialist manufacturers drawings and specifications.

Any discrepancies in dimensions or details on or between these drawings should be drawn to our attention.

All dimensions are in millimetres unless noted otherwise.

Any surveyed information incorporated within this drawing cannot be guaranteed as accurate unless confirmed by fixed dimension.

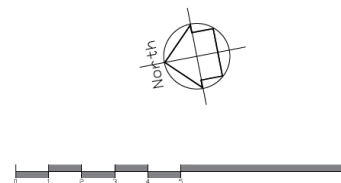
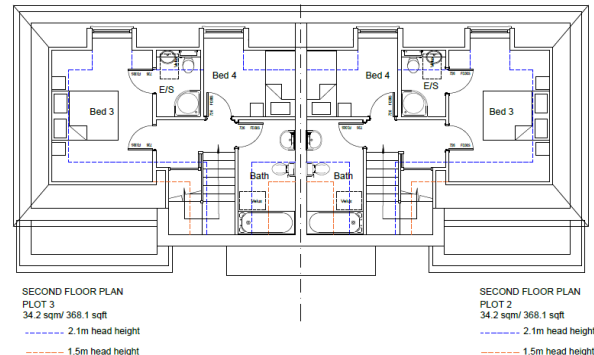
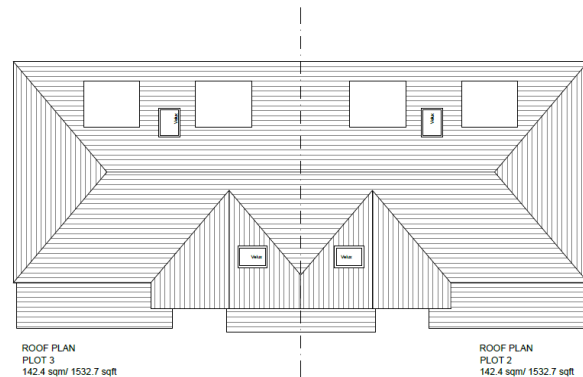
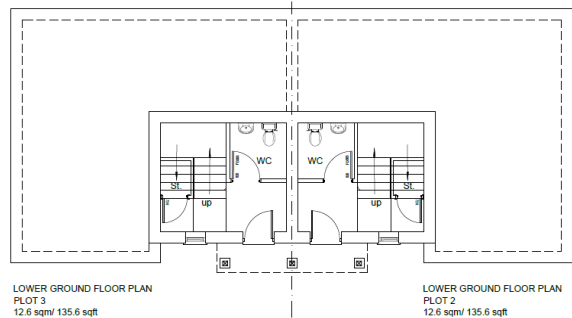
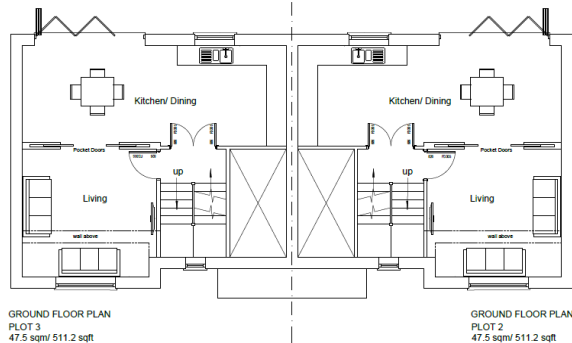
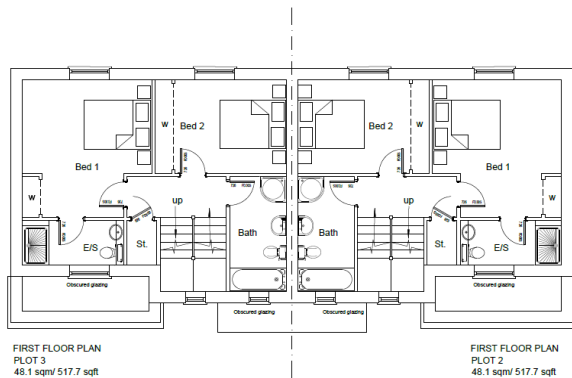
REV	DATE	DESCRIPTION	INITIAL	CHECKED
PLANNING				



harding rose architects

CLIENT	Samco Construction Ltd
PROJECT	The Haven, 19 York Crescent, Aldershot, GU11 3JN
TITLE	Plots 2 & 3 Proposed Side Elevations

SCALE	1:100 @A2	DATE	28.08.20
DRAWN	AC	PROJECT NO.	20.797
		P.07	-



© This drawing is copyright.
It is sent to you in confidence and must not be reproduced or disclosed to third parties without our prior permission.

Do not scale from this drawing, other than for Local Authority Planning purposes.

This drawing is to be read in conjunction with all relevant consultants, specialist manufacturers drawings and specifications.

Any discrepancies in dimensions or details on or between these drawings should be drawn to our attention.

All dimensions are in millimetres unless noted otherwise.

Any surveyed information incorporated within this drawing cannot be guaranteed as accurate unless confirmed by fixed dimension.

REV	DATE	DESCRIPTION	INITIAL	CHECKED
PLANNING				



harding rose architects

CLIENT Samco Construction Ltd
PROJECT The Haven, 19 York Crescent, Aldershot, GU11 3JN

TITLE Plots 2 & 3 Proposed Plans

SCALE 1:100 @A2	DATE 28.08.20	P.05 -
DRAWN AC	PROJECT NO. 20.797	

© This drawing is copyright.
It is sent to you in confidence and must not be reproduced or disclosed to third parties without our prior permission.

Do not scale from this drawing, other than for Local Authority Planning purposes.

This drawing is to be read in conjunction with all relevant consultants, specialist manufacturers drawings and specifications.

Any discrepancies in dimensions or details on or between these drawings should be drawn to our attention.

All dimensions are in millimetres unless noted otherwise.

Any surveyed information incorporated within this drawing cannot be guaranteed as accurate unless confirmed by fixed dimension.



Proposed Street Scene
(West)



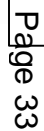
REV	DATE	DESCRIPTION	INITIAL	CHECKED
PLANNING				



harding rose architects

CLIENT Samco Construction Ltd
PROJECT The Haven, 19 York Crescent, Aldershot, GU11 3JN
TITLE Proposed Street Scene

SCALE 1:100 @A2	DATE 28.08.20	PROJECT NO. 20.797	P.08	-
DRAWN AC				



EX MH. LIFTED COVER
& BELIEVE TO BE SW.
FROM CULLIES AT END
OF

Page 34

SW EXIT MH WITH
CONTROL DEVICE TO
LIMIT MAX DISCHARGE
OF 5 LITRES/SEC

Foliage
Ht=1.8m

EXISTING M.H.
TO TOWN SEWER.
TO BE RECONSTRUCTED.

TRAGORDEN.

THE HAVEN SITE

T1
C2

Electrical
Sub-Station

T2
C1

T3
C1

T5
B1

T4
B1

T6
B3

T7
A3

T8
A3

T11
C1

T10
C1

- PROPOSED FLOW WATER
- PROPOSED SURFACE WATER

Indictive Proposed Drainage Scheme

V & R

VINCENT
& RYMILL

Consulting Civil & Structural Engineers

Job
THE HAVEN,
YORK CRESCENT ALDERSIDY

Title
PROPOSED DRAINAGE
SCHEMATIC C.A.

Scale
1:200

Date
DEC 2021

Job No
21106

Dwg No
SK1,

Rev



Figure 2: Results of the badger assessment

© This drawing is copyright.
It is sent to you in confidence and must not be reproduced or disclosed to third parties without our prior permission.

Do not scale from this drawing, other than for Local Authority Planning purposes.

This drawing is to be read in conjunction with all relevant consultants, specialist manufacturers drawings and specifications.

Any discrepancies in dimensions or details on or between these drawings should be drawn to our attention.

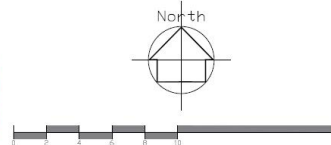
All dimensions are in millimetres unless noted otherwise.

Any surveyed information incorporated within this drawing cannot be guaranteed as accurate unless confirmed by fixed dimension.

Proposed gate to be fitted with opening flap for badgers
200 x 300mm located in the bottom of the gate.
Additional openings
130 x 130mm to be provided in bottom of the fence to allow for hedgehog access

Line of 1.8m high close boarded fence to demarcate residential curtilage

Additional Land given to Tragorden



LEGEND

- Grass
- Driveway- Marisals Block Paving - Brindle
- Marisals Block Paving - Charcoal
- Patio/ Path- Marisals Indian Sandstone
- Igloo Hedgehog Home x7
- Hedgehog Holes (5 square inches) with signage x3
- Bat Boxes on Dwellings x3
- Bat Boxes in Trees x3
- Bird Boxes on Dwellings x3
- Bird Boxes in Trees x3
- Log Pile/ Hibernaculum x3
- Viburnum Opulus 'Roseum'
- Lavendula 'Hidcot'
- Native hedgerow (Hawthorn, Blackthorn, Dog Rose and Holly)
- Wildflower Meadow
- Category 'A' Tree Canopy shown N E S W
- Category 'B' Tree Canopy shown N E S W
- Prunus Spinosa
- Lonicera Periclymenum
- Corylus Avellana
- Rosa Canina
- Category 'C' Tree Canopy shown N E S W
- Root Protection Area

REV DATE DESCRIPTION INITIAL CHECK

PLANNING



harding rose architects

CLIENT Samco Construction Ltd
PROJECT The Haven, 19 York Crescent, Aldershot, GU11 3JN
TITLE Proposed Landscaping Plan

SCALE 1:200 @A2 DATE 03.02.22
DRAWN AC PROJECT NO. 20.797
P.09 E

© This drawing is copyright.
It is sent to you in confidence and must not be reproduced or disclosed to third parties without our prior permission.

Do not scale from this drawing, other than for Local Authority Planning purposes.

This drawing is to be read in conjunction with all relevant consultants, specialist manufacturers drawings and specifications.

Any discrepancies in dimensions or details on or between these drawings should be drawn to our attention.

All dimensions are in millimetres unless noted otherwise.

Any surveyed information incorporated within this drawing cannot be guaranteed as accurate unless confirmed by fixed dimension.

Category 'A' Tree
Canopy shown N E S W

Category 'B' Tree
Canopy shown N E S W

Category 'C' Tree
Canopy shown N E S W

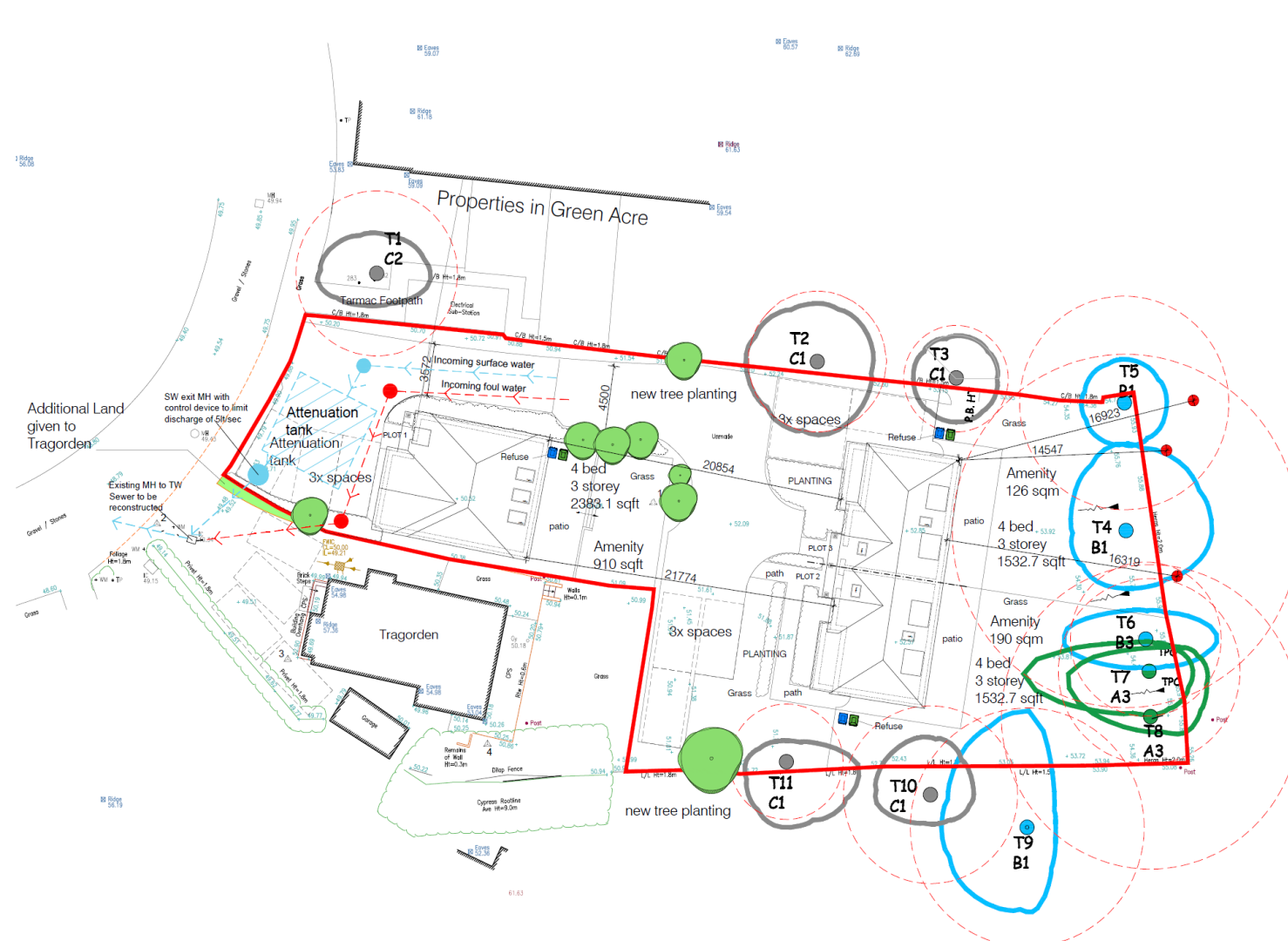
Root Protection Area

REV	DATE	DESCRIPTION	INITIAL	CHECKED
PLANNING				



harding rose architects

CLIENT Samco Construction Ltd		DATE 03.02.21	
PROJECT The Haven, 19 York Crescent, Aldershot, GU11 3JN		PROJECT NO. 20.797	
TITLE Proposed Site Layout		SCALE 1:200 @A2	
DRAWN AC		P.01 G	



Development Management Committee

16th February 2022

The meeting has now finished

Development Management
Committee

16th February 2022

Page 39



This page is intentionally left blank